



Research & Development Company  
**PROMELECTRONICA**

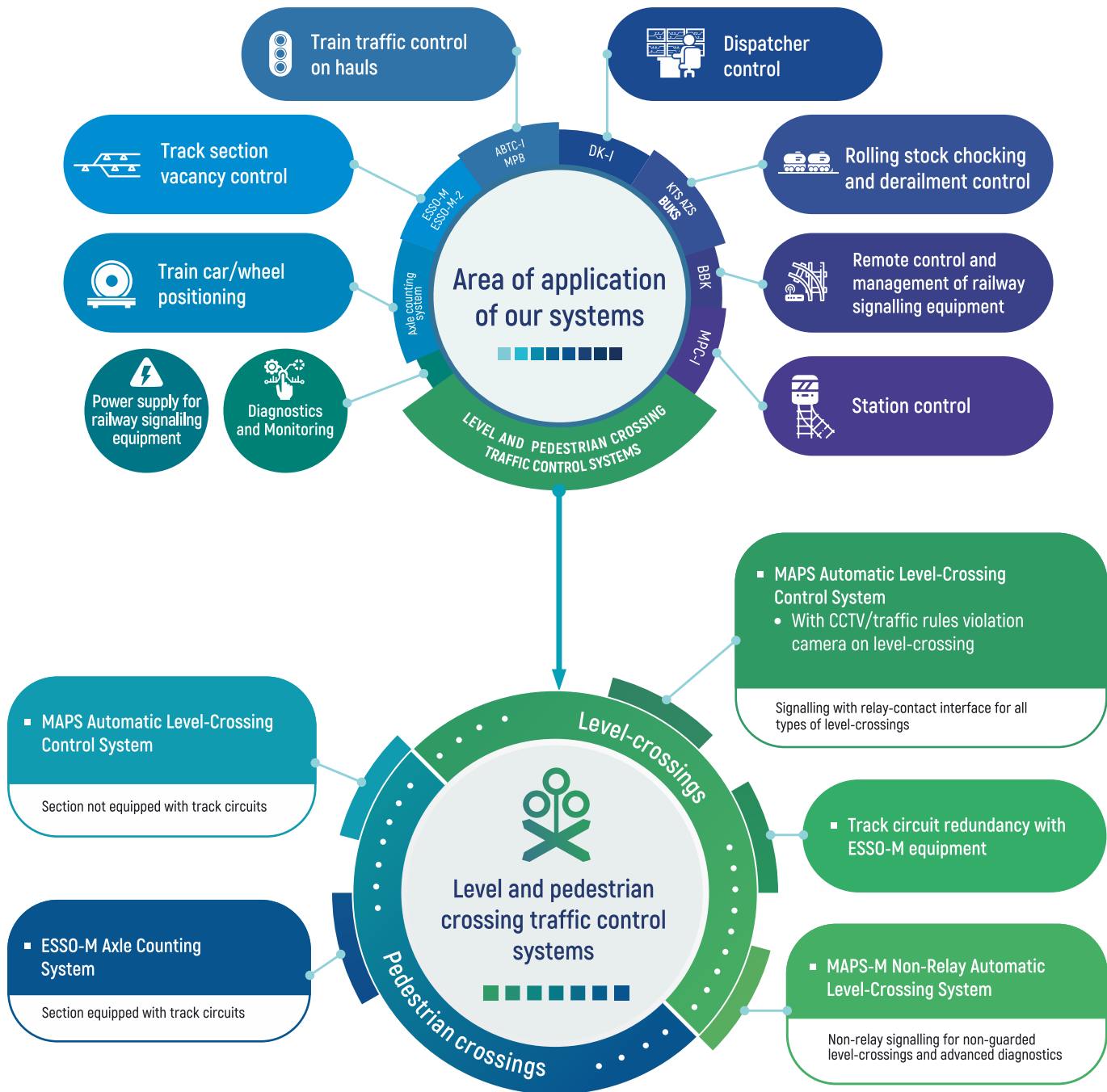


Level and pedestrian  
crossing traffic  
control systems

**MAPS AUTOMATIC  
LEVEL-CROSSING CONTROL SYSTEM**

**MAPS-M AUTOMATIC NON-RELAY  
LEVEL-CROSSING SYSTEM**

  
npcprom.ru



# AREA OF APPLICATION

- MAPS: the system is designed for guarded and non-guarded level and pedestrian crossings on railway lines with any traffic intensity and train spacing systems.
- MAPS-M: non-relay system designed for non-guarded level-crossings at single- and double-track lines, fitted with any type of train spacing systems.

- Increasing of train and car traffic safety at level-crossings, as well as the safety of pedestrians at pedestrian-crossings.
- Reduction of time and labour required for level-crossing construction.
- Reduction of running costs due to reduced quantity of relays and absence of track circuits.
- Improvement of work environment for maintenance personnel due to in-built diagnostic and event logging systems.
- Depending on level-crossing conditions, the system equipment can be housed in a stationary building, a relay cabinet or MKM Mobile Equipment Container.



ALREADY FITTED  
83 LEVEL-CROSSINGS

IMPLEMENTED IN  
5 COUNTRIES

TEMPERATURE RANGE  
-60...+85°C

SIMPLE  
INTEGRATION

## RELIABILITY AND SAFETY

Recommended for application  
on **Russian Railways**

**Protection** against lightning  
and surge overvoltages

**High reliability** even at failure  
of 2 counting posts

**Award of Russian Railways** for quality  
of complex technical equipment



# USER ADVANTAGES



In-built diagnostics, event logging.



Factory ready solution.



Easy to install, low maintenance system.



User-friendly interface of MAPS-M indication panel.



ULIS MAPS Lab Set is available for personnel training.



# CCTV CAPABILITY



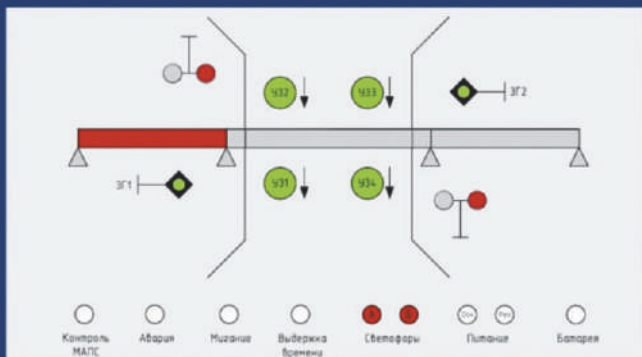
Increased traffic safety.



Recording of events on level-crossing and watchman's actions.



Reliable evidence base.



- 14:18:25 проезд на запрещающий сигнал светофора гос. номер К100ВК196
- 14:18:22 проезд на запрещающий сигнал светофора гос. номер К300ОМ96
- 14:18:20 проезд на запрещающий сигнал светофора гос. номер Х036ХВ96
- 14:18:18 переездная сигнализация включена
- 14:18:18 занятие участка извещения
- 14:05:54 освобождение участка удаления
- 14:04:49 шлагбаумы в вертикальном положении
- 14:04:49 переездная сигнализация выключена
- 14:04:40 УЗП отпущены
- 14:04:37 потеря контроля УЗП
- 14:04:37 освобождение зоны переезда
- 14:04:28 занятие участка удаления
- 14:04:18 освобождение участка извещения
- 14:04:09 занятие зоны переезда
- 14:03:24 УЗП подняты
- 14:03:20 потеря контроля УЗП



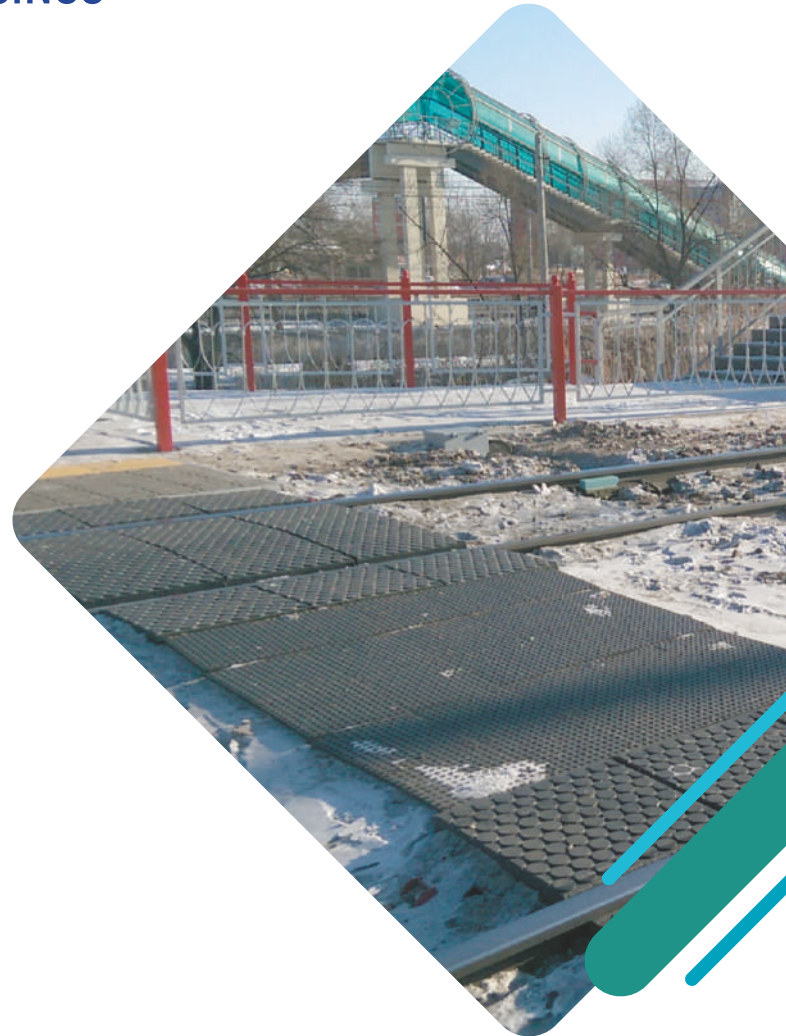
Дата/Время: 2018-07-25 14:18:26:01  
 Коорд.: N59.880707 E29.904118  
 Переезд ПК 160200 г. Екатеринбург, ул. Примерная, 99

# EQUIPMENT OF PEDESTRIAN-CROSSINGS

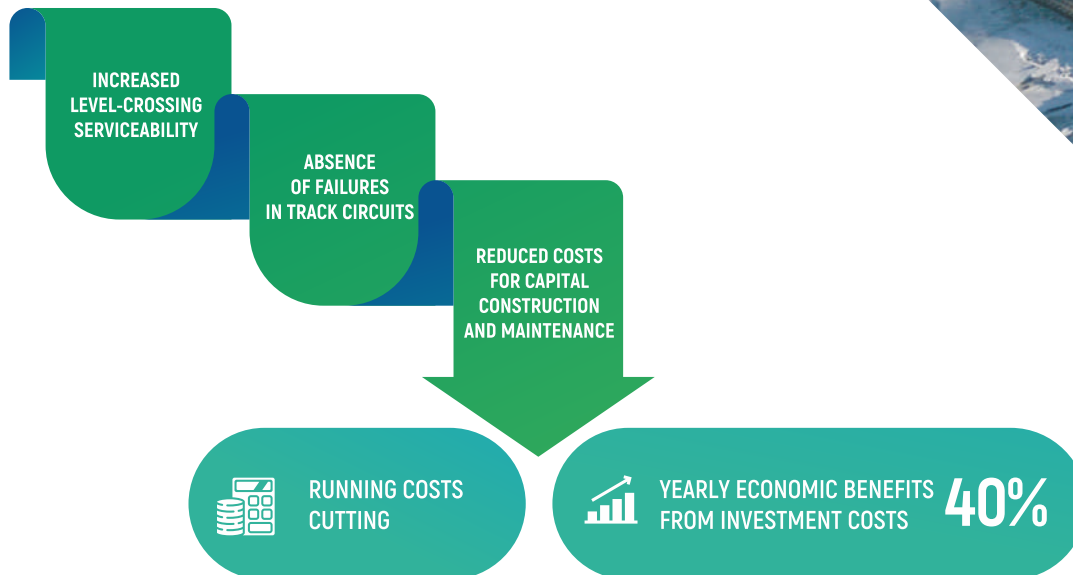
Pedestrian-crossings can be arranged both on single and multitrack sections with and without track circuits.

ESSO-M Axle Counting System is used to control pedestrian-crossing signalling equipment if a section is equipped with the track circuits. In case there are no track circuits, MAPS Automatic Level-Crossing Control System is used.

MAPS and ESSO-M systems use wheel sensors to detect vacancy/occupancy of track sections. Boundaries of a section are fitted with counting posts, which are connected to the indoor equipment of the systems.



## MAPS, MAPS-M COST-EFFICIENCY





620078, Russia, Yekaterinburg, 128A  
Malysheva Street



Phone: +7 (343) 358-55-00  
Fax: +7 (343) 378-85-15



[info@npcprom.ru](mailto:info@npcprom.ru)

